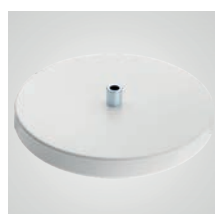


Accessories



Code	S11
Description	S11 clamp

- NM
- GM
- BM
- NE
- GR
- BI
- NG



Code	BASEPE
Dimensions	Diameter 256
Weight	10,1 kg
Description	Heavy base (10,1kg)

- GM
- BM
- NE
- GR
- BI
- NG



Code	S12
Description	S12 clamp

- NM
- GM
- BM
- NE
- GR
- BI



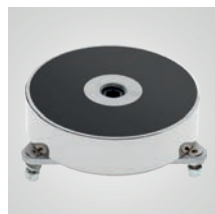
Code	GP
Description	Reflector's protection cage diameter 165mm

- NM



Code	S15
Description	S15 clamp

- NM
- GM
- BM
- NE
- GR
- BI



Code	C70
Description	Magnet, diameter 71 mm

Code	C80
Description	Magnet, diameter 82mm



Code	AS2
Description	Adaptor for S11, S15, RL and BASEPE



Code	AS2
Description	Adaptor for S11, S15, RL and BASEPE



Code	RL
Dimension	H:800 mm, W:610 mm
Description	Wheeled base

- BI