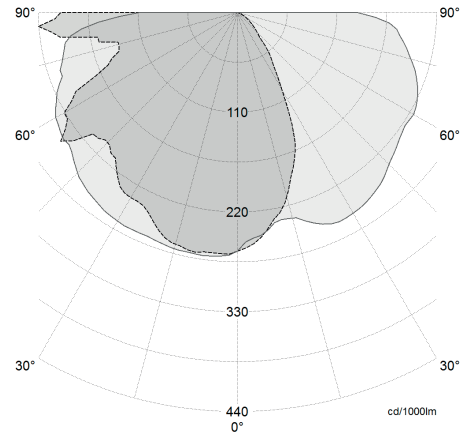
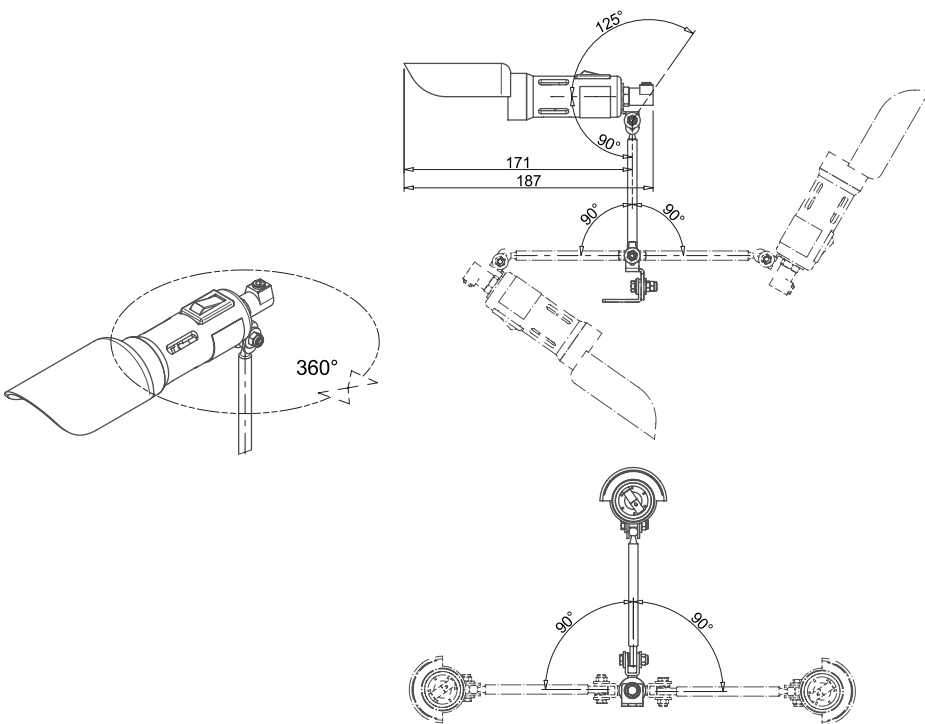




MC /1

Designed for applications requiring the presence of a small light source, the MC/1 is an excellent companion for column drills, operating machines, sewing machines, and for lighting paintings and works of art.





MC /1

The MC/1 model features a self-extinguishing glass fibre filled nylon moulded body. The lamp is controlled by a rocker switch located on the top of the device. The product is available in 230 V and 24 V versions.

Code	MC1	MC1CAL
Power	25 W	25 W
Supply	24 V	24 V
ES	E14	E14
Reflector's diameter	30 mm	30 mm
Structure	100 mm arm with 1 joint	100 mm arm with 1 joint
IP protection	IP20	IP20
Class	III	III
Cable	2x0,75 mm 100 cm with no plug (24 V)	2x0,75 mm 100 cm with no plug (24 V)
Fixing	fork	magnet

ORDER CODE

Black	MC1
With Magnet	MC1CAL