



RIMSA

Via Monterosa, 18/22
20831, Seregno (MB) - Italy
Tel. + 39 0362 325709
Fax + 39 0362 328559
E-mail: info@rimsa.it

Rimsa retain a right to improve the products in the catalogue without notice.
Reproduction in part or in whole is forbidden.



Rif. July 2020



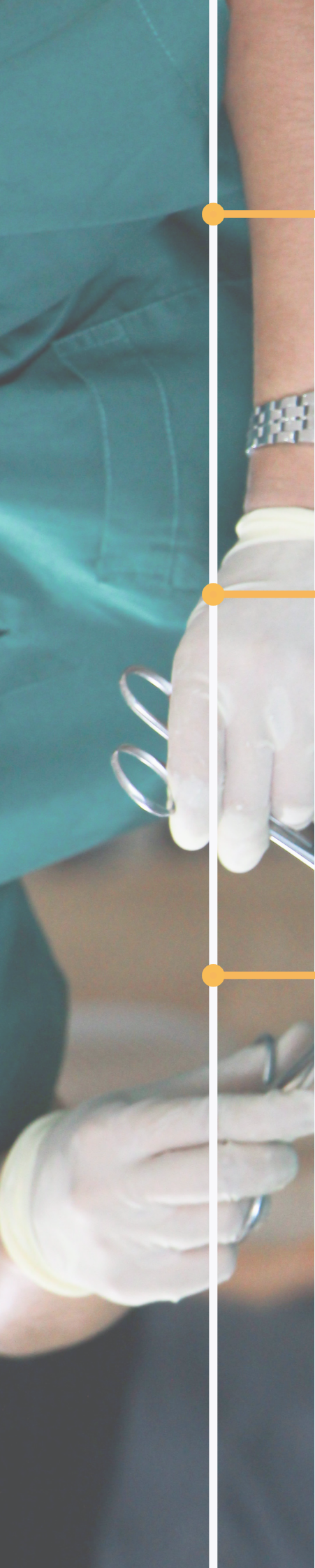
www.rimsa.it



vet

**Strengthened by the
experience gained in
the medical field,
RIMSA has decided to
face the veterinary
world with purposely
designed new.**

Catalogue



In **2002** we introduced the very **first LED surgical light** when the technology was still in its infancy.

In **2017** we patented the world **first 100% glare-free surgical light** thus offering a solution to any visual impairments due to the lighting.

In **2020** we pioneered the surgical lighting market with a further achievement: a **Vet specifically designed surgical light**.

Our products

vet CAVALIER

Cavalier light is a concentration of **unparalleled performance technology** in a **compact** and extremely **handy dome** that have already met the expectations of many **vet surgeons**.

vet GOLDEN

Golden Light is the only available lighting solution purposely **conceived, designed** and **manufactured** for **veterinary purposes**.

vet MASTIFF

In **2002**, Rimsa achieved a remarkable result: we **researched** and **manufactured** the world first LED surgical light. In 2017 we went a step further by **developing a Glare-Free surgical light**.



vet CAVALIER

Cavalier light is a **concentration** of unparalleled **performance** technology in a **compact** and **extremely handy dome**.

Rimsa Vet line products are particularly intended for a veterinary use. The technical specifications purposely **designed to satisfy veterinary requirements** have already met the expectations of many vet surgeons.

Cavalier light, despite its **small dimensions**, offers an outstanding lighting quality.

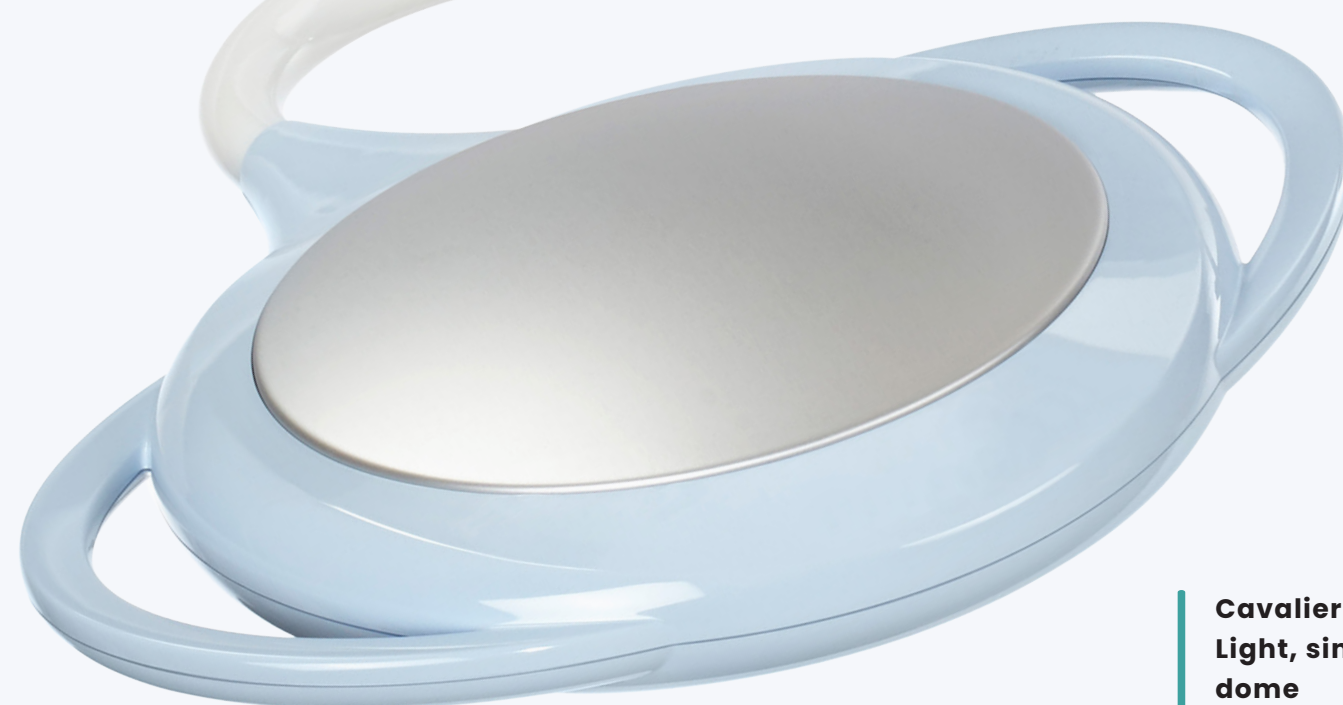
The product has 28 white LEDs spread on a surface 40cm wide. A set of specifically designed lens convey all the lighting rays from the LEDs on the surgical field. From a knob at the center of the cupola it is possible to **adjust the lighting diameter**. Diameter adjustment allows to reach an outstanding surgical field largeness of 33 cm with 120.000 lux.

Cavalier light allows for a double selection of **color temperature**: the user can easily swap between **4500K and 5000K** at the **touch** of a button. Color selection is made possible by the use of two different types of white LEDs, thus avoiding any risk of color diffraction on the operating area when an obstacle is present between the light source and the surgical field.



**LIGHTING
FIELD**

11 - 33 cm



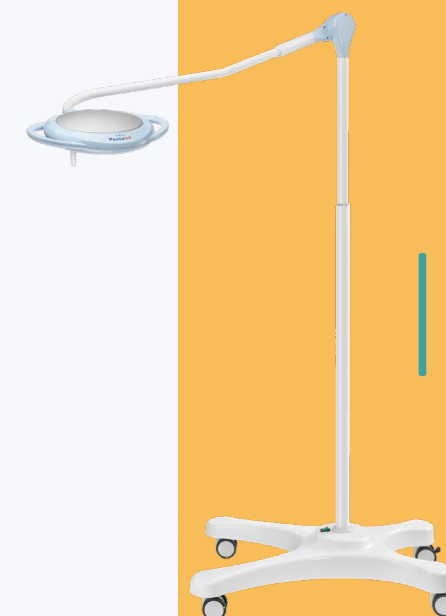
**Cavalier
Light, single
dome**



**Cavalier
Light, double
dome**



**Cavalier
Light, wall
mounted**



**Cavalier
Light, mobile
stand**

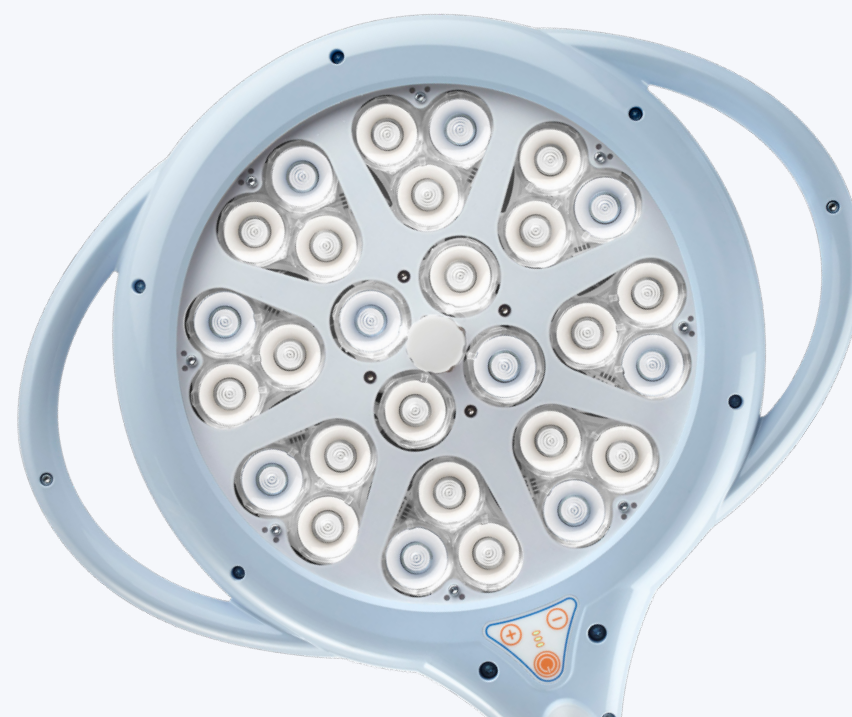
The **aluminum layout grants** an exceptionally good heat dissipation which ensures a long **life** of over **60,000 hours**, an incredibly **low power consumption** (47W) and ensures that lighting characteristics will not be affected even after a long procedure.

The **smoothness** and **flexibility** of the product are guaranteed by the unique **arm structure, designed, developed and manufactured by Rimsa's highly specialized team.**

The **cleaning** of the cavalier light is made **fast and easy** thanks to the absence of any uneven surface. The **polycarbonate protecting the lighting engine** confers high resistance against scratches.



ACCESSORIES
Battery group



RIMSA

www.rimsa.it

vet | GOLDEN

Golden Light **truly cares for veterinary surgeon's needs**, Golden light is not a traditional surgical light adapted for veterinary purposes but rather a vet specific surgical light with a **larger field diameter** and designed to allow for the surgeon to **work without the assistance** of a medical equipe.

Conscious of the many differences to human surgical lighting both in terms of design and use, RIMSA's engineers spent their efforts to come up with this ultimate solution. Golden Light stands as the only available lighting solution purposely conceived, designed and manufactured for veterinary purposes.

The use of RIMSA's "**always on focus**" technology, makes it possible to have a focalized light at any distance. The surgeon can thus **freely move the light** within the working range distance and the light would always be on focus.

The **adjustable lighting field** can be set at any size from 11cm up to 35cm mm thus offering the surgeon an extremely **large operating area**. A wider lighting field compared to that offered by a traditional surgical light allows the surgeon not to move the light-head throughout the operation.

The **lighting field diameter** can be easily **increased** or **decreased** through a capacitive sensor **on the sterile handle** thus offering the surgeon full control of the light.

The smoothness and flexibility encountered by the surgeon in maneuvering the light is made possible by an **ad hoc arm structure** specifically designed and manufactured by RIMSA for the Golden Light.

The meticulous **calibration** of the lamp's weights guarantees the stability of the light-head and **prevents** from any **unwanted movements**. The easiness to move allows the product to be **used by** the surgeon **himself**, without the need for any further assistance which might not be always available.

Golden Light has been designed to offer cleaning easiness and respond to the principles of **ergonomic**. The polycarbonate screen confers **high resistance against scratches**.

Golden Light can be **controlled from a membrane** on the side of the light head or remotely with an IR controller or from a wall panel. Among the available selection:

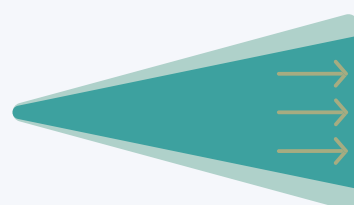
- *color temperature* (from 4000 to 4600k)
- *dim the light intensity*
- *activate and deactivate endo light* (a support light for endoscopy or to be used to light up the room).



Wall Control Panel
Monitor arm (single and double)
Double Yoke

ACCESSORIES

Battery Group
HD Camera (signal HD-SDI)
HD Wireless Camera
Remote Control IR



Large operating area

11 - 35cm



Golden Light, single dome



Golden Light, wall mounted



Golden Light, double dome and double fork



Golden Light, mobile stand

RIMSA

www.rimsa.it

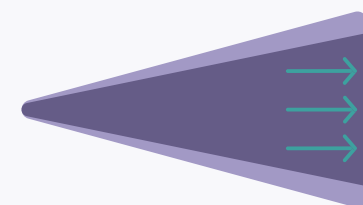
yet MASTIFF

Thanks to the **2R technology**, the complete **suppression of the glaring effect** caused by the light emitted by the lamp, has been attained.

The 2R technology provides a **decisive reply to some of the most dangerous problems** highlighted by the medical literature, namely the glaring effect and the black spots. At the hearth of this technology lies the ability to optically maneuver the lighting beams through an ingenious system of mirrors and lenses.

Developed in collaboration with the **Italian engineering academia**, this product displays further technological features such as the **maximization of the light emitting surface**.

The head of the mastiff light is a uniform light emitting element; thanks to its indirect lighting principle, it is not the case that several lighting rays insist on an area but rather that **a single and uniform flux of light flows from the lamp to the surgical field**.



LIGHTING FIELD

21 - 35 cm

Wall Control Panel
Monitor arm (single and double)
Double Yoke

ACCESSORIES

Battery Group
HD Camera (signal HD-SDI)
HD Wireless Camera
Remote Control IR

This peculiarity turns into a better shadow control. Furthermore, Mastiff light displays a series of characteristics intended to decisively **support the surgeon and his equipe**.

A supplementary lighting diameter at low lighting intensity is present to further contrast the risk of black spots (**compensation area**).

Mastiff Light has been designed and manufactured to fulfill any **ergonomic and maneuverability expectation**.

The light head is shaped as to allow for manual interaction and the **ability to control the light intensity from the sterile handle** offers the surgeon an unparalleled aid.

The entire structure has been designed and manufactured by Rimsa to **grant absolute maneuverability**.

Mastiff light, in contrast with all the other products of the RIMSA vet series, is not particularly intended for a veterinary use, yet, because of its unmatched characteristics has already made itself a name among vet practitioners.



RIMSA



Mastiff Light, double dome

Mastiff Light, single dome



Mastiff light, wall mounted



Mastiff Light, mobile stand

www.rimsa.it

Technical properties

Cavalier Light

Technical details of light	CAVALIER LIGHT	Depth of illumination IEC 60601-2-41 (L1 + L2) at 60%	92 cm
Light intensity, 1 m distance (Ec)	120,000 lux	Depth of illumination IEC 60601-2-41 (L1 + L2) at 20%	155 cm
Light head diameter	40 cm	Total radiated energy Ee where the illuminance reaches max level	456 W/m²
Colour temperature [K]	2 selections: 4,500 – 5,000K	Ratio between radiated energy Ee and illuminance Ec	3,62
Colour rendering index (CRI)	94 Ra	Average led life	> 60,000
diameter adjustment	Manual	Control of the illuminance	20 – 100%
d10 light field diameter where illuminance reached 10% of Ec	28 cm	Electrical absorption	47 W – 85 VA
Light field adjustment – to – [cm]	11-33 cm		

Golden Light

Technical details of light	GOLDEN LIGHT	Max radation in UV [W/m²]	0.002
Light intensity, 1 m distance (Ec)	160,000	Power connection details	
Colour temperature [K]	4,000 – 4,600	Primary alternate voltage [Volt ac]	100 – 240
Colour rendering index (CRI)	95 Ra	Frequency [Hz]	50 / 60
Light field diameter d10 [cm] (D)	26 cm	Absorbed power [VA]	71
Light field adjustment – to – [cm]	11 – 35 cm	Light Source	No. 81 LEDs
Lighting depth L1+L2 [cm] at 60%	81 cm	Duration of LED diode light source (this figure can very according to power peaks and operatin frequency	50,000
Max radation [W/m²]	556	Light intensity control [%]	25 – 100
Irradiance / Illumination [mW/ m²lx]	3.47		

Mastiff Light

Dettagli tecnici della luce	MASTIFF LIGHT	Depth of illumination IEC 60601-2-41 (L1 + L2) at 20%	103 cm
Light intensity, 1 m distance (Ec)	160.000 lux	Total radiated energy Ee where the illuminance reaches max level	580 W/m²
Colour temperature [K]	da 3800K a 5000k	Ratio between radiated energy Ee and illuminance Ec	3,68
Colour rendering index (CRI)	96 Ra	Primary alternate voltage [Volt ac]	100 – 240 V
R9	96	Frequency [Hz]	50 / 60 Hz
d10 light field diameter where illuminance reached 10% of Ec	210 mm	Absorbed power [VA]	53 W
Light field adjustment – to – [cm]	21 – 35 cm	Number of LED	84 Led
Lighting depth L1+L2 [cm] at 60%	49 cm	Average led life	50.000 ore

Special features



In 2017, Rimsa patented the 2R, double reflection technology which ensures the maximization of the lighting emitting surface thus allowing UNICA Series products to achieve a terrific surgical effect and offering a completely glare free illumination.



A surgical light offers up to 160.000 lux. The literature suggests that such a high illuminance constitutes a major risk in the operating room. The surgeon, its equipe and all those persons working in close proximity with such an intense light are subject to the glaring risk. Rimsa drastically reduced the glaring risk by adopting an indirect lighting emitting surface and the removal of the glaring effect. Unica Series products, with 2R technology managed to ultimately the glaring risk.



An additional light source called E-view (Extended-View) makes it possible to expand the lit field at the edges without affecting the light intensity at the centre (Ec). Such perk allows the light to become an optimal solution for the following procedures: thoracicsurgery, abdominal surgery, caesarean births and all those procedures when the surgeon needs to operate with an extended field.



The centre of the lamp is fitted with an additional LED module specifically designed to reflect deep light. E-deep means the surgeon can operate with perfetc 3D lighting, especially in cavities.