

## ORDER CODE

**166-LED-GM**

**GM** **Hammered Grey**

**166-LED-BM**

**BM** **Hammered White**

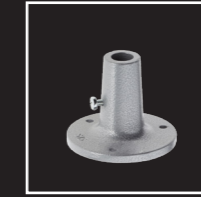
## ACCESSORIES



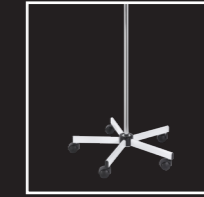
**S11**



**S12MED**

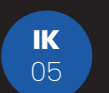
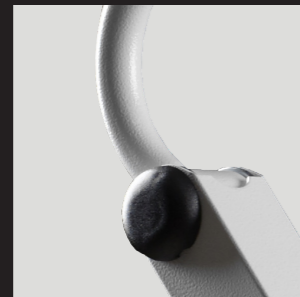


**S15**



**RL**

|                                      |  |
|--------------------------------------|--|
| <b>Power</b>                         | 15.5 W   |
| <b>Supply</b>                        | 110-240 V  |
| <b>Illuminance at 50cm</b>           | 1.770 lux  |
| <b>Lighting Intensity Adjustment</b> | 0,5 - 100 %  |
| <b>Colour Temperature</b>            | 5.300 K  |
| <b>Reflector's length</b>            | 40 cm  |
| <b>Diameter of the light field</b>   | 700 x 650 mm   |
| <b>Product's life</b>                | 50.000 hours   |
| <b>Structure</b>                     | Reflector + 3 joints   |
| <b>IP Protection</b>                 | IP20   |
| <b>IK Protection</b>                 | IK05   |
| <b>Class</b>                         | III  |
| <b>Cabling</b>                       | Plug-top transformer with AWG 2x21;<br>interchangeable plugs |
| <b>Fixing</b>                        | S11 / S12MED / S15 clamp / RL                                |
| <b>Colours</b>                       | Hammered Grey, Hammered White                                |
| <b>Order Code</b>                    | GOLD-LED-GM, GOLD-LED-BM                                     |



The GOLD-LED model, thanks to its sturdy structure and because of its large rectangular reflector, is well suited in goldsmithery and where precision is needed.

# GOLD-LED

