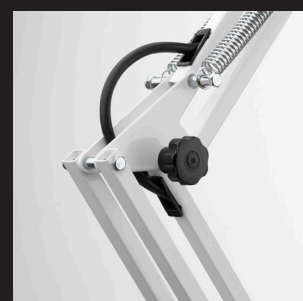
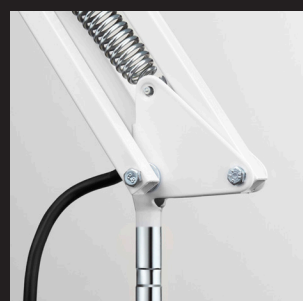
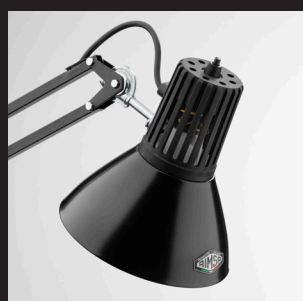




AUGMENTED REALITY
3D MODEL



Reflector consisting of a top part in glass fibre filled nylon and a lower part in turned iron with finishing edge.
Can use both LED and Incandescent bulbs.

Mod.10

ACCESSORIES



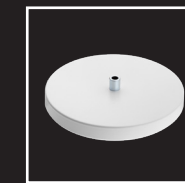
S11



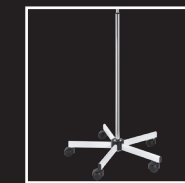
S12MED



S15



BASEPE

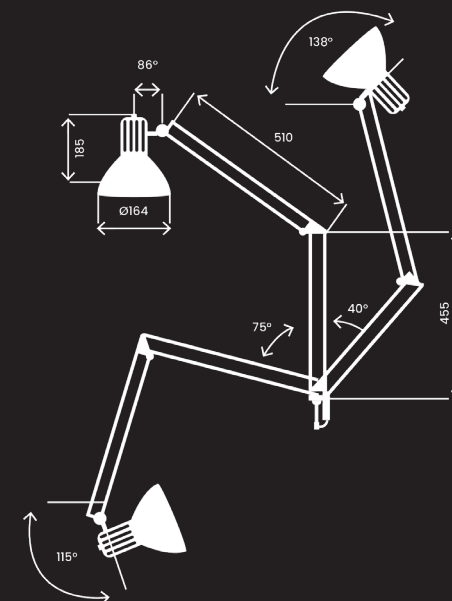


RL



GP

Power	60 W
Supply	220-240 V
ES	E27
Reflector's diameter	160 mm
Structure	Pantograph
IP Protection	IP20
Class	I
Cabling	H03 VVF 3X0.75 170 cm with 2P + T 10A Plug
Fixing	S11/ S12MED/ S15 clamp/ desk base/ RL
Colours	Black, Grey, White
Order Code	10NE, 10GR, 10BI



ORDER CODE

10NE

NE Black

10GR

GR Grey

10BI

BI White

