

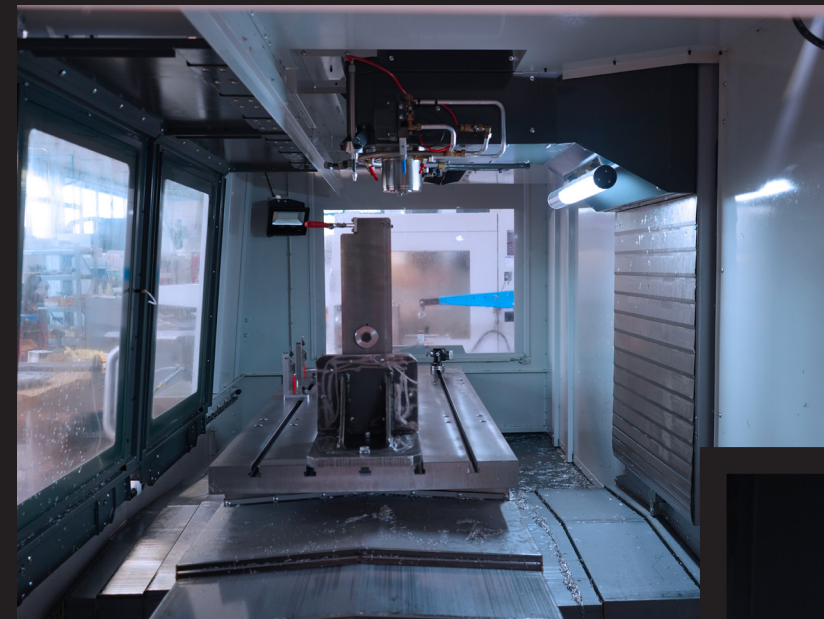
LED
CYLINDRICAL
PMMA

LED
CYLINDRICAL
GLASS

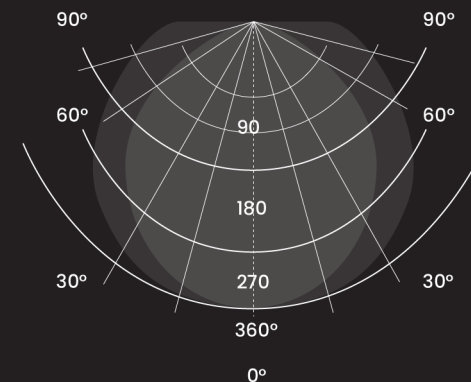
Code	Power	Feeding	Colour temperature	Brilliance	tube Ø	Lenght	Body	IP	IK	Class	Power cable	Fixing
LONG TLED40-24 TLED40-230	1 LED TUBE 40 W	24 V ca/ac 230 V	6500 K	6690 lm	70 mm	1498 mm	CYLINDRICAL IN PMMA SCRATCH-RESISTANT	IP67	IK07	III - II	ABSENT	2 LOCKING BRACKETS
MEDIUM TLED18-24 TLED18-230*	1 LED TUBE 18 W	24 V ca/ac 230 V	6500 K	3060 lm	70 mm	707 mm	CYLINDRICAL IN PMMA SCRATCH-RESISTANT	IP67	IK07	III - II	ABSENT	2 LOCKING BRACKETS
SHORT TLED12-24 TLED12-230	1 LED TUBE 12 W	24 V ca/ac 230 V	6500 K	2100 lm	70 mm	512 mm	CYLINDRICAL IN PMMA SCRATCH-RESISTANT	IP67	IK07	III - II	ABSENT	2 LOCKING BRACKETS
LONG VTLED40-24 VTLED40-230	1 LED TUBE 40 W	24 V ca/ac 230 V	6500 K	6690 lm	70 mm	1498 mm	CYLINDRICAL IN BOROSILICATE GLASS	IP67	IK07	III - II	ABSENT	2 LOCKING BRACKETS
MEDIUM VTLED18-24 VTLED18-230*	1 LED TUBE 18 W	24 V ca/ac 230 V	6500 K	3060 lm	70 mm	707 mm	CYLINDRICAL IN BOROSILICATE GLASS	IP67	IK07	III - II	ABSENT	2 LOCKING BRACKETS
SHORT VTLED12-24 VTLED12-230	1 LED TUBE 12 W	24 V ca/ac 230 V	6500 K	2100 lm	70 mm	512 mm	CYLINDRICAL IN BOROSILICATE GLASS	IP67	IK07	III - II	ABSENT	2 LOCKING BRACKETS

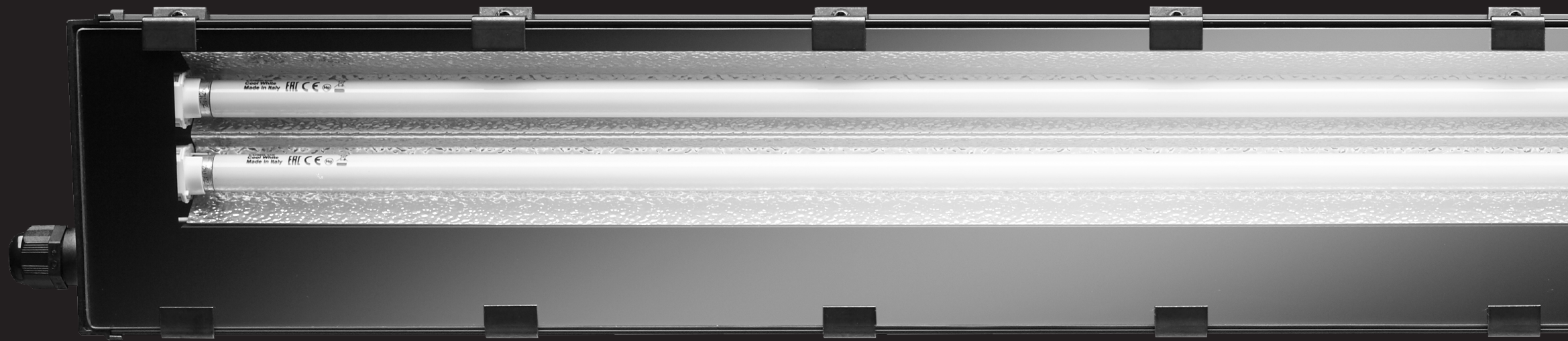
*Also available in 115 V version. For the code use 115 instead of 230.

These watertight ceiling lights are particularly suitable to illuminate the working area of a machine tool that requires a well stratified linear illumination of both the spindle and the working area.



TLED18 model installed on a CNC



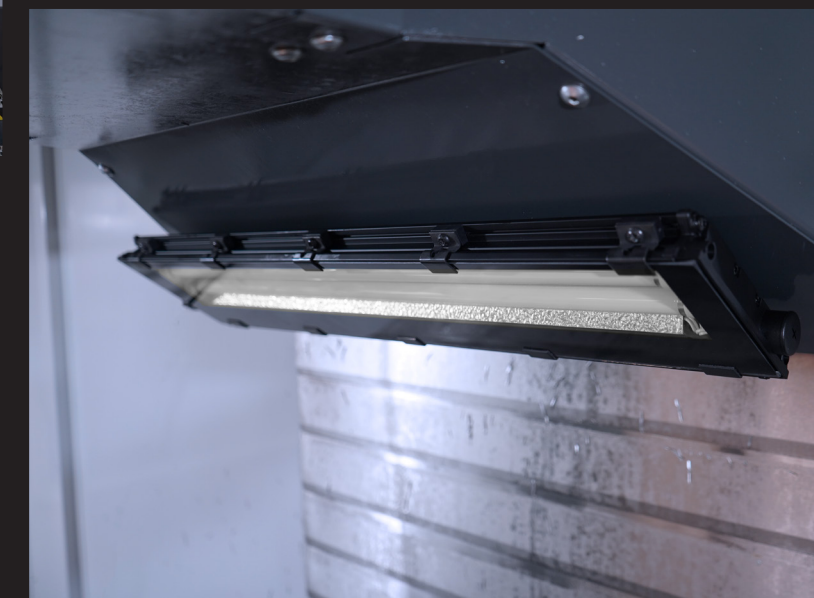


Code	Power	Feeding	Size	Safety screen	Body	IP Protection	IK Protection	Class	Power cable	Fixing
PSLED23W-230	2 LED TUBES T5	23 W	935 x 130 x 29 mm	TEMPERED GLASS	EXTRUDED ALUMINIUM	IP67	IK08	I	ABSENT	WITH HOOKS
PSLED18W-230	2 LED TUBES T5	18 W	635 x 130 x 29 mm	TEMPERED GLASS	EXTRUDED ALUMINIUM	IP67	IK08	I	ABSENT	WITH HOOKS

This ceiling light consists of a sturdy black anodised extruded aluminum profile. The aluminum body dissipates the heat produced by the electronic supply circuit and the LED tube, considerably increasing their lifespan.

The body of the product in Polymethylmethacrylate offers excellent resistance to acids, diluted alkaline solutions, grease and oil.

The molded polymer side parts are screwed directly to the extruded aluminium body, while the front of the ceiling lamp is covered by a 4 mm tempered Pirex glass screen and perfectly sealed with polyurethane.



PSLED18W model installed on a CNC

PSLED 23W-230

18W-230

