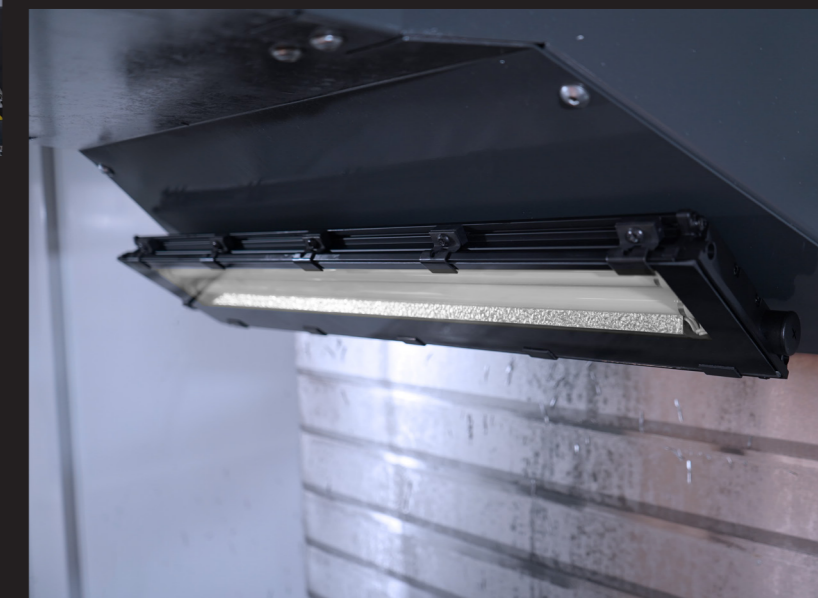


Code	Power	Feeding	Size	Safety screen	Body	IP Protection	IK Protection	Class	Power cable	Fixing
PSLED23W-230	2 LED TUBES T5	23 W	935 x 130 x 29 mm	TEMPERED GLASS	EXTRUDED ALUMINIUM	IP67	IK08	I	ABSENT	WITH HOOKS
PSLED18W-230	2 LED TUBES T5	18 W	635 x 130 x 29 mm	TEMPERED GLASS	EXTRUDED ALUMINIUM	IP67	IK08	I	ABSENT	WITH HOOKS

This ceiling light consists of a sturdy black anodised extruded aluminum profile. The aluminum body dissipates the heat produced by the electronic supply circuit and the LED tube, considerably increasing their lifespan.

The body of the product in Polymethylmethacrylate offers excellent resistance to acids, diluted alkaline solutions, grease and oil.

The molded polymer side parts are screwed directly to the extruded aluminium body, while the front of the ceiling lamp is covered by a 4 mm tempered Pirex glass screen and perfectly sealed with polyurethane.



PSLED18W model installed on a CNC

# PSLED 23W-230

## 18W-230

